

- **TreC – Cartella Clinica del Cittadino**  
([trec.trentinosalute.net](http://trec.trentinosalute.net), TRL 9)

TreC is a digital platform that allows all citizens living in the Trentino Region to access and manage their own health information. From August 2012 TreC is one of the services of our Provincial Health Care System. From December 2013 the TreC platform has been included into the Italian national list of reusable programs. TreC has been selected as one of the best practice of public procurement.

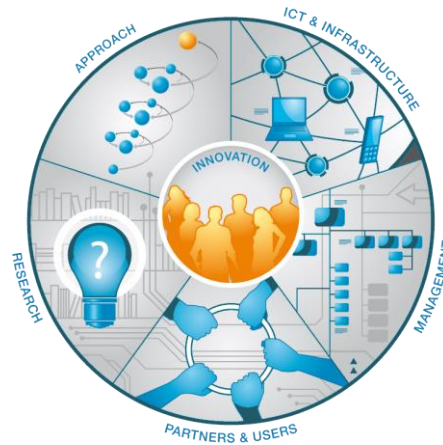
- **TreC\_Lab apps**

([play.google.com/store/search?q=TreC\\_Lab](http://play.google.com/store/search?q=TreC_Lab), TRL 6)

TreC-native android mobile applications used by voluntary chronic patients according to their hospital physicians in “living labs” contexts for evaluation and validation of models of integrated management.

- **OncoSys**  
(TRL 9)

It is a web-based, user-centered electronic Oncological Patient Record (eOPR) system developed in order to facilitate the clinical, organizational, and administrative management of oncological patients in the Trentino Region. From July 2000 it is routinely used by the Medical Oncology and the Radiotherapy Units of the S. Chiara Hospital and six oncological day hospitals. From 2004 the system is sold by Mtt- pro.



## health & wellbeing

Introducing  
innovative e-health services  
in the daily life of citizens  
and in the clinical practice.

### Need to contact us?



[forti@fbk.eu](mailto:forti@fbk.eu)



[ict.fbk.eu](http://ict.fbk.eu)  
[ehealth.fbk.eu](http://ehealth.fbk.eu)



+39 0461.314165



**Center for Information & Communication  
Technology – Fondazione Bruno Kessler (FBK  
ICT Center)**

Via Sommarive, 18 -38121 Povo (Trento)- Italy



We are a **multidisciplinary group** conducting research on **methods and models for the design, implementation and evaluation** of prototypic applications of ICT-based innovative services that support the **management and sharing of data, information and knowledge in healthcare domain**.

We adopt a **“living lab approach”** taking into account the social, organizational and institutional aspects in order to assess both the short and the long term effects on the field of the deployment of innovative technologies.

Our research interest concerns studying methods and models for designing applications and innovative services in healthcare domain.

In particular:

- **Territorial Innovation in the field of e-health**

To design and build next generation services supporting the processes of prevention and care at a personalized level, with the goal of making individuals the manager of their health and a partner of health workers.

In this regard, citizens/patients are active players in the maintenance of their health/ disease condition within a patient empowerment-based framework, through a variety of ICT tools and services for self and remote monitoring by health professionals.



remote monitoring by health professionals.

- **Integrated management of patients with chronic diseases**

To produce prototypes targeted at the support of integrated management of chronic patients between the various actors involved in the different stages of the care process.



The aim is to analyze the different levels of care and assistance to identify needs, and implement and evaluate appropriate tools to support existing processes. The systems implemented are subjected to multidisciplinary assessment to investigate the forms of appropriation and evaluate possible changes of directions of development.



On-line resources:

- **Italian Consumer-oriented Vocabulary**  
([ehealthwiki.fbk.eu/index.php/Pagina\\_principale](http://ehealthwiki.fbk.eu/index.php/Pagina_principale))
- **TreC Cartella Clinica del Cittadino**  
([trec.trentinosalute.net](http://trec.trentinosalute.net))
- **Trec Common Platform FBK**  
([treclab.fbk.eu/menu](http://treclab.fbk.eu/menu))



PHR system architecture

- **TreC\_Lab apps**  
TreC-native android mobile applications available on Google Play store by searching "TreC\_Lab"  
([play.google.com/store/search?q=TreC\\_Lab](http://play.google.com/store/search?q=TreC_Lab))

